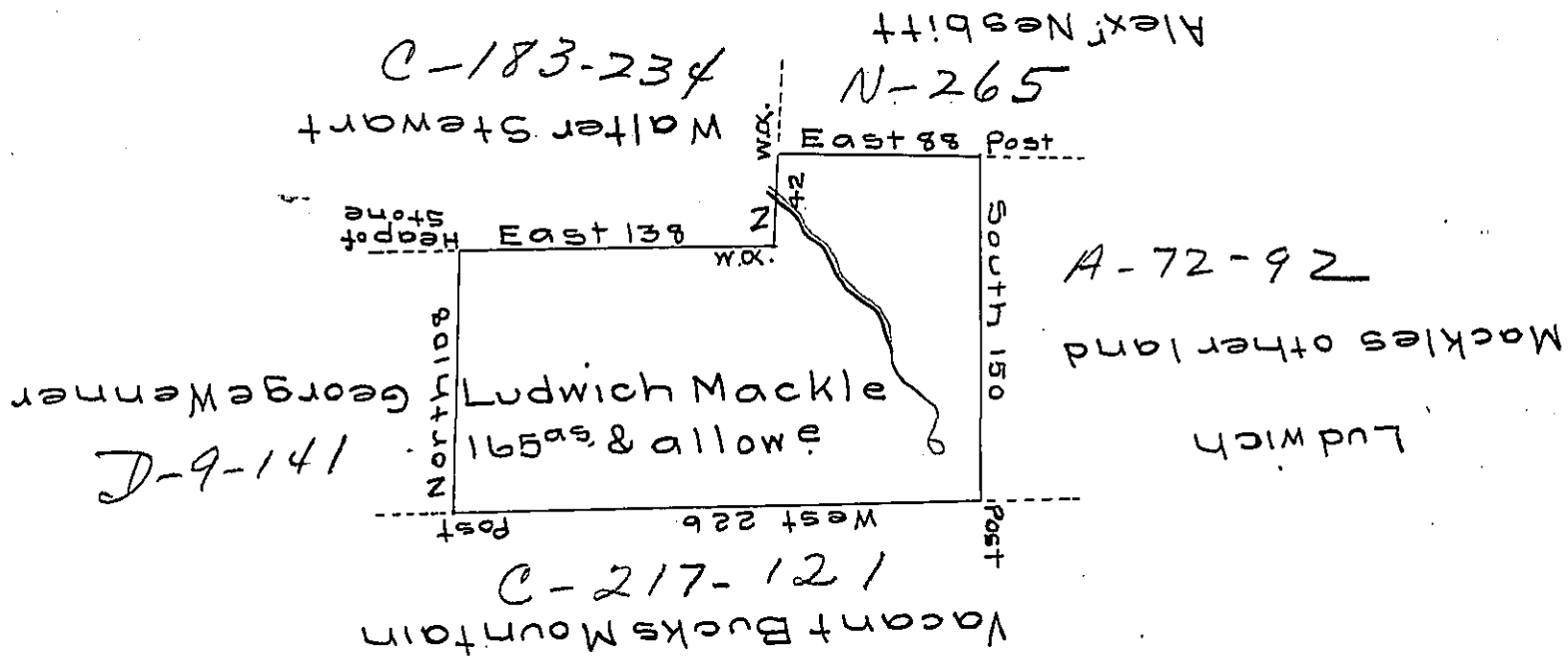


Butler -
Luzerne



Draft of a tract of land called — situate on a small spring that falls into Little Nescopeck in the County of Northumd containing one hundred and sixty five acres and allowance surveyed for Ludwich Mackle the 23^d day of May 1793 in pursuance of a warrant dated the 27th day of March 1793

Daniel Brodhead Esq. } by
 Surv^r Gen! } Wm Gray D.S.

IN TESTIMONY that the above is a copy of the original remaining on file in the Department of Internal Affairs of Pennsylvania, made conformably to an Act of Assembly approved the 16th day of February, 1833, I have hereunto set my Hand and caused the Seal of said Department to be affixed at Harrisburg, this fourth day of December 1905

Geo. R. Brown
 Secretary of Internal Affairs.